

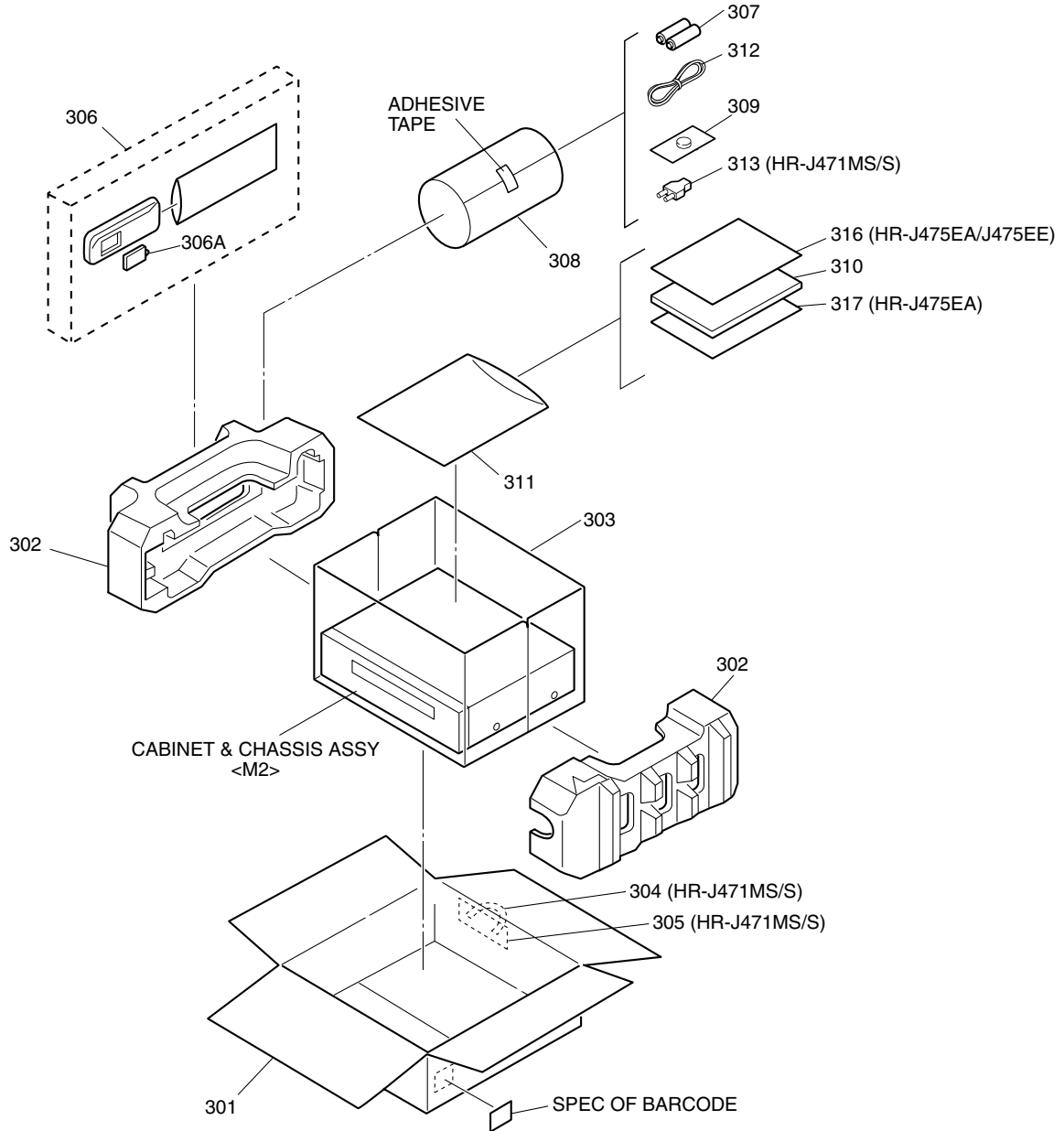
SECTION 5 PARTS LIST

SAFETY PRECAUTION

Parts identified by the \triangle symbol are critical for safety. Replace only with specified part numbers.

5.1 PACKING AND ACCESSORY ASSEMBLY <M1>

The instruction manual to be provided with this product will differ according to the destination.



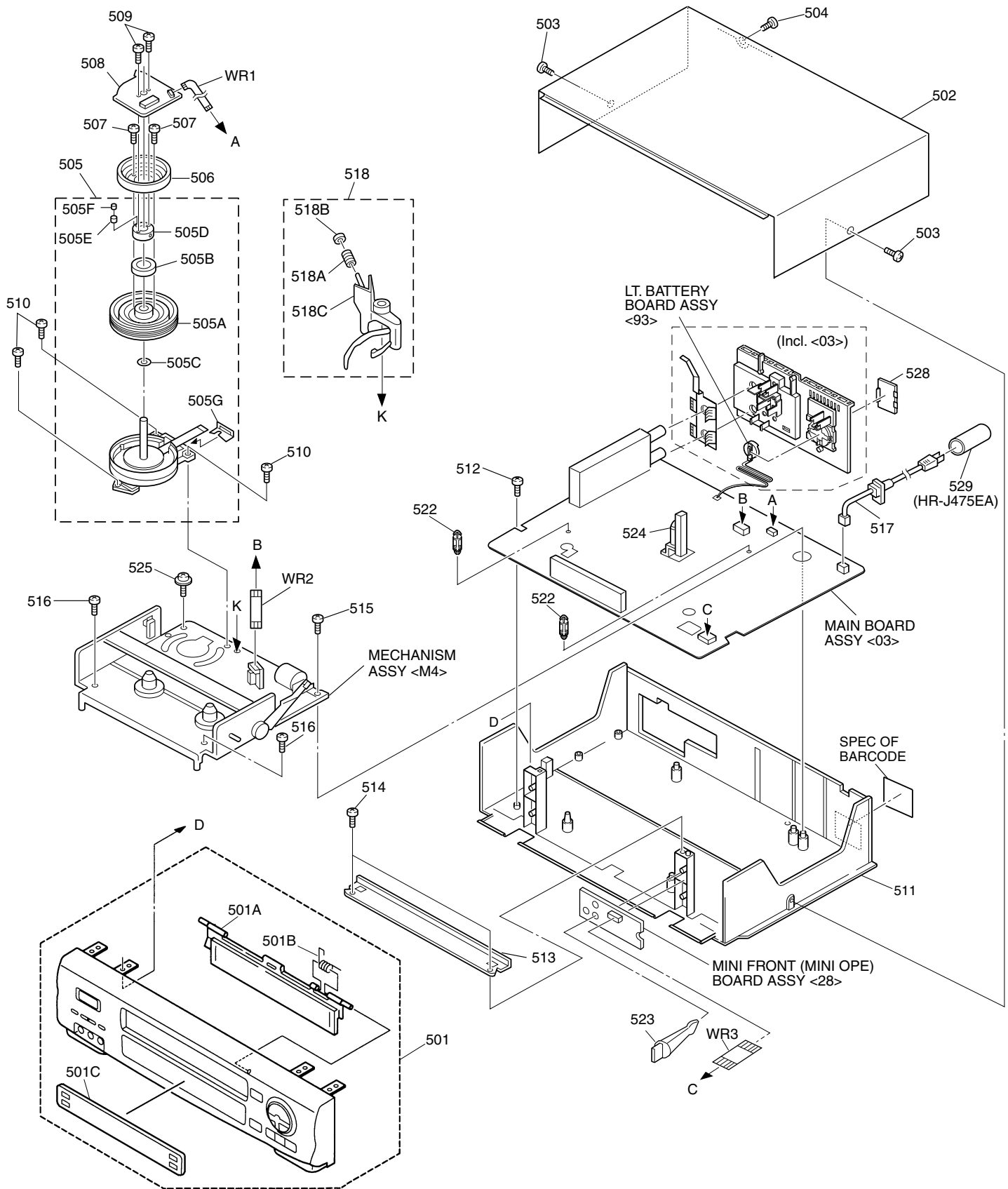
# \triangle	REF No.	PART No.	PART NAME, DESCRIPTION	# \triangle	REF No.	PART No.	PART NAME, DESCRIPTION

PACKING AND ACCESSORY ASSEMBLY <M1>							
	301	LP30670-021A	PACKING CASE, J471MS/S		307	-	BATTERY, X2("R6" TYPE)
		LP30742-002B	PACKING CASE, J475EA		308	QPC02202230P	POLY BAG
		LP30742-004A	PACKING CASE, J475EE	\triangle	309	PECA0903	LI BATTERY
	302	LP30671-001C	CUSHION ASSY	\triangle	310	LPT0424-001A	INST. BOOK(EN), J475EA
	303	PQM30021-92	POLY BAG	\triangle		LPT0441-001A	INST. BOOK(RU), J475EE
	304	PQ35439	HANDLE, J471MS/S	\triangle		LPT0422-001A	INST. BOOK(EN.CH), J471MS/S
	305	PQ35430-1-2	SHEET(HANDLE), J471MS/S	\triangle		LPT0422-002A	INST. BOOK(RU.AR), J471MS/S
	306	LP20878-008A	REMOTE CONTROLLER		311	QPC02503530P	POLY BAG
	306A	LP40610-002A	COVER(BATTERY)		312	PEAC0348-02	RF CABLE
				\triangle	313	PEMC1012	CONVERSION PLUG, J471MS/S
					316	BT-56001-2	WARRANTY CARD, J475EA
						BT-54012-1	WARRANTY CARD, J475EE
					317	BT-56002-2	SERVICE NET CARD, J475EA

5.2 CABINET AND CHASSIS ASSEMBLY <M2>

BEWARE OF BOGUS PARTS

Parts that do not meet specifications may cause trouble in regard to safety and performance. We recommend that genuine JVC parts be used.



▲ REF No. PART No. PART NAME, DESCRIPTION

▲ REF No. PART No. PART NAME, DESCRIPTION

CABINET AND CHASSIS ASSEMBLY <M2>

▲	501	LP10293-015B	FRONT PANEL ASSY,J471MS/S
▲		LP10289-017B	FRONT PANEL ASSY,J475EA
▲		LP10289-019B	FRONT PANEL ASSY,J475EE
	501A	LP20868-019A	CASSETTE DOOR,J471MS/S/J475EE
		LP20868-021A	CASSETTE DOOR,J475EA
	501B	PQ46448	TORSION SPRING
	501C	LP20869-054A	DISPLAY WINDOW,J471MS/S
		LP20869-056A	DISPLAY WINDOW,J475EA
		LP20869-058A	DISPLAY WINDOW,J475EE
▲	502	PQ11898-38-18	TOP COVER
	503	QYTDSF3010M	SCREW,X2 TOP COVER(SIDE)
	504	QYTDSF3010M	SCREW,TOP COVER(REAR)
	505	LP20617-004A	DRUM SUB ASSY
	505A	LP20084-006A	UPPER DRUM ASSY
	505B	PDM4439	CAP
	505C	PDM4444-19-2	WASHER
	505D	LP40572-001A	COLLAR ASSY
	505E	LP40323-001A	CONTACT
	505F	LP30004-014A	COMPRESSION SPRING
	505G	LP40174-001B	FPC PLATE
	506	PDZ0179-1-4	ROTOR ASSY
	507	QYSPSP3006Z	SCREW,X2
▲	508	QAR0119-001	STATOR ASSY
	509	QYSPSPH2606Z	SCREW,X2
	510	QYTDST2610Z	SCREW,X3 DRUM
▲	511	LP20262-003H	BOTTOM CHASSIS
	512	QYTDSF3010Z	SCREW,MAIN
	513	LP30312-001B	BRACKET(CHASSIS)
	514	QYTDSF3010Z	SCREW,X2
	515	QYTDSF4012Z	SCREW,MECHA
	516	QYTDSF3010Z	SCREW,X2 MECHA
▲	517	QMP73J0-170	POWER CORD,J471MS/S
▲		QMP2990-220	POWER CORD,J475EA
▲		QMP4A10-170	POWER CORD,J475EE
	518	LP40369-001D	CLEANER ASSY
	518A	PQ46418-1-2	CLEANER ROLLER
	518B	PQ46419-1-2	CLEANER
	518C	LP30407-001D	CLEANER ARM
	522	LP40226-001A	PC SUPPORT,X2
	523	LP40628-001B	PC SUPPORT,FRONT
	524	LP40253-001B	STOPPER
	525	PQ40413	SPECIAL SCREW,MECHA
	528	LP30336-001A	CAP,LT BATTERY
	529	PM30137	POLY BAG(POWER PLUG),J475EA
	WR1	QUQ212-0518CG	FFC WIRE,DRUM CN3001
	WR2	WJT0005-002A	E-CARD WIRE,A/C HEAD CN2001
	WR3	QUQ112-0914CG	FFC WIRE,FRONT